



विद्याविनियोगाद्विक्रमः

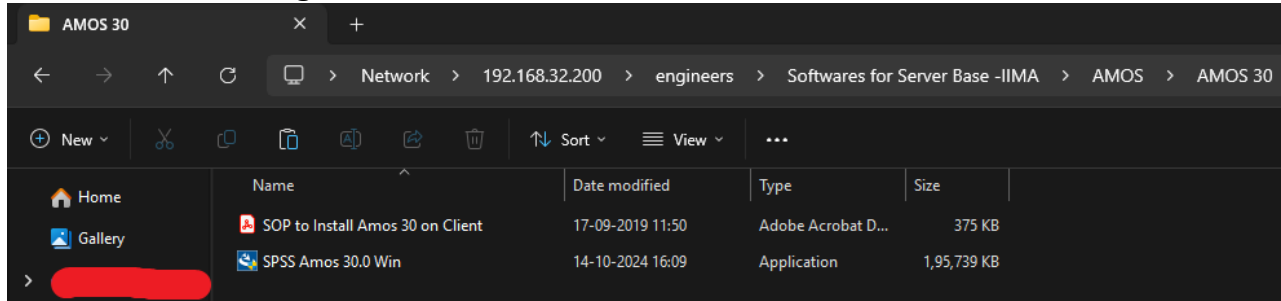
# SOP to Install AMOS

-: SOP :-

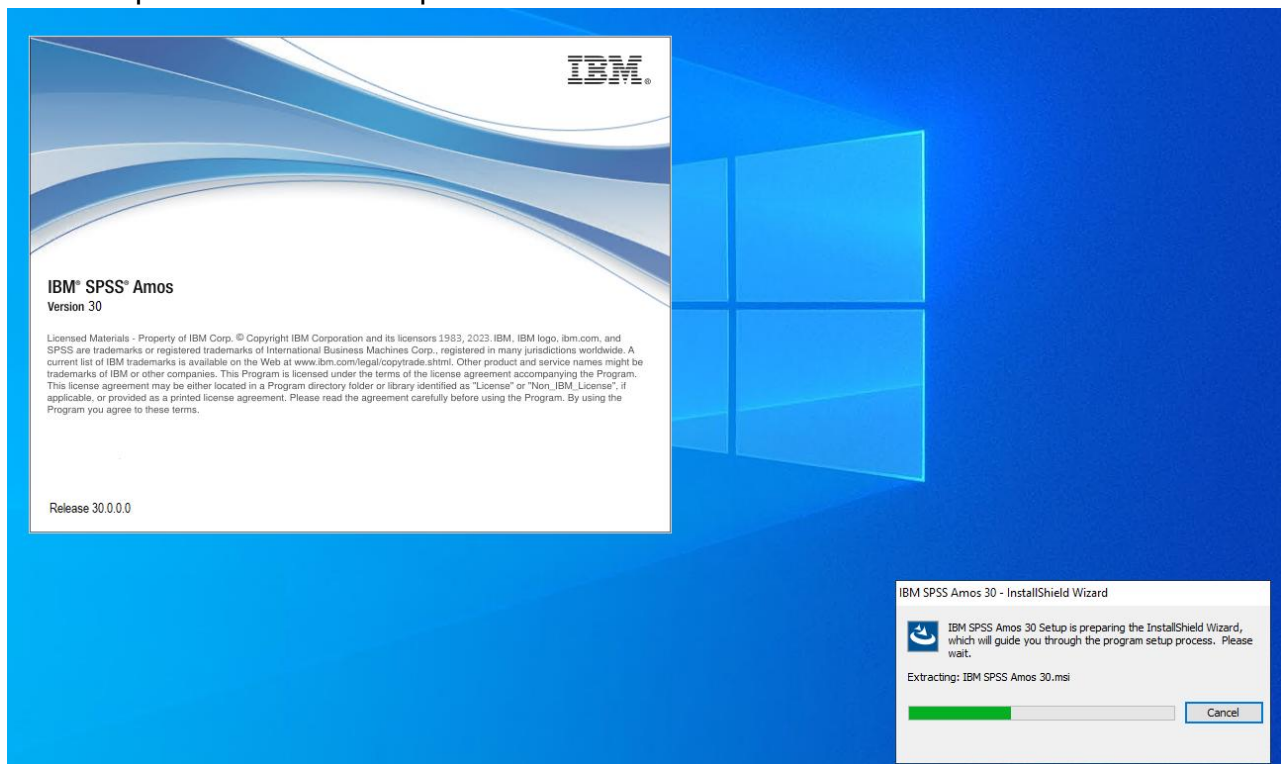
November 2024

## SOP to Install AMOS

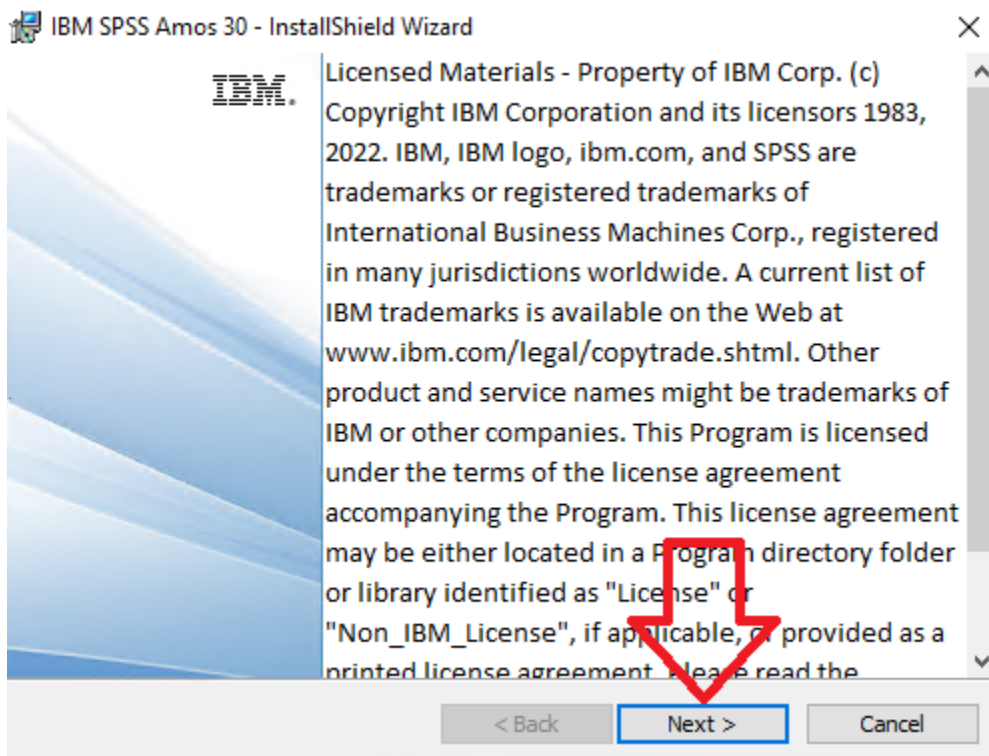
1. Copy AMOS 30 setup file to local computer from below path –  
**\\192.168.32.200\engineers\Softwares for Server Base -IIMA\AMOS\AMOS 30**



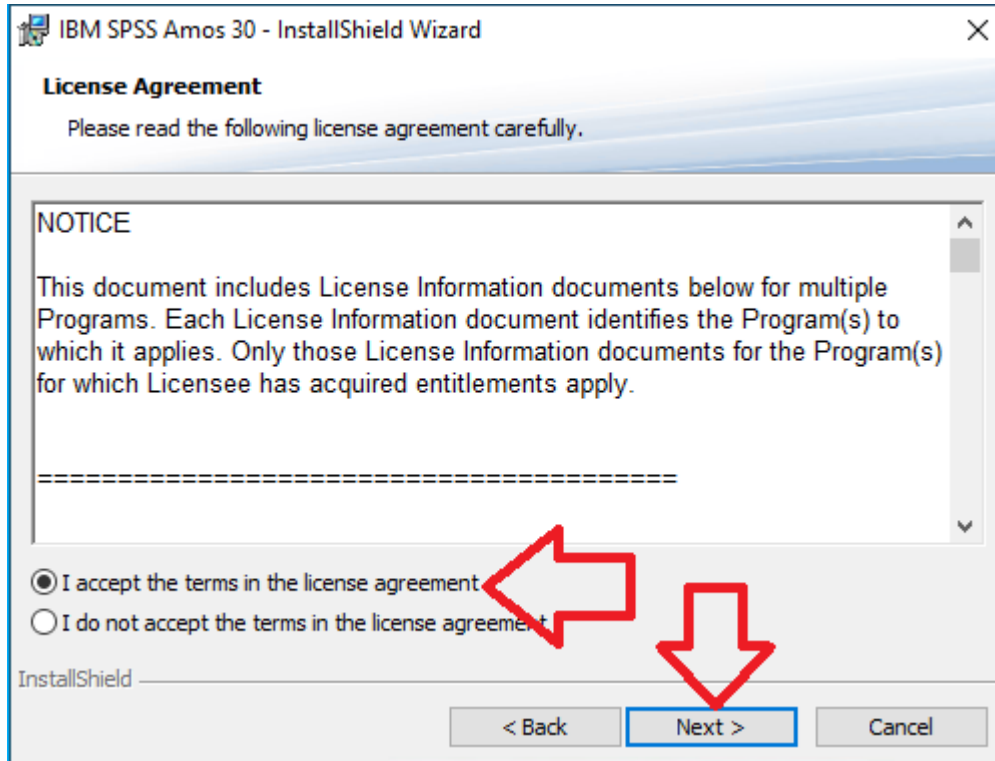
2. Run setup file from local computer.



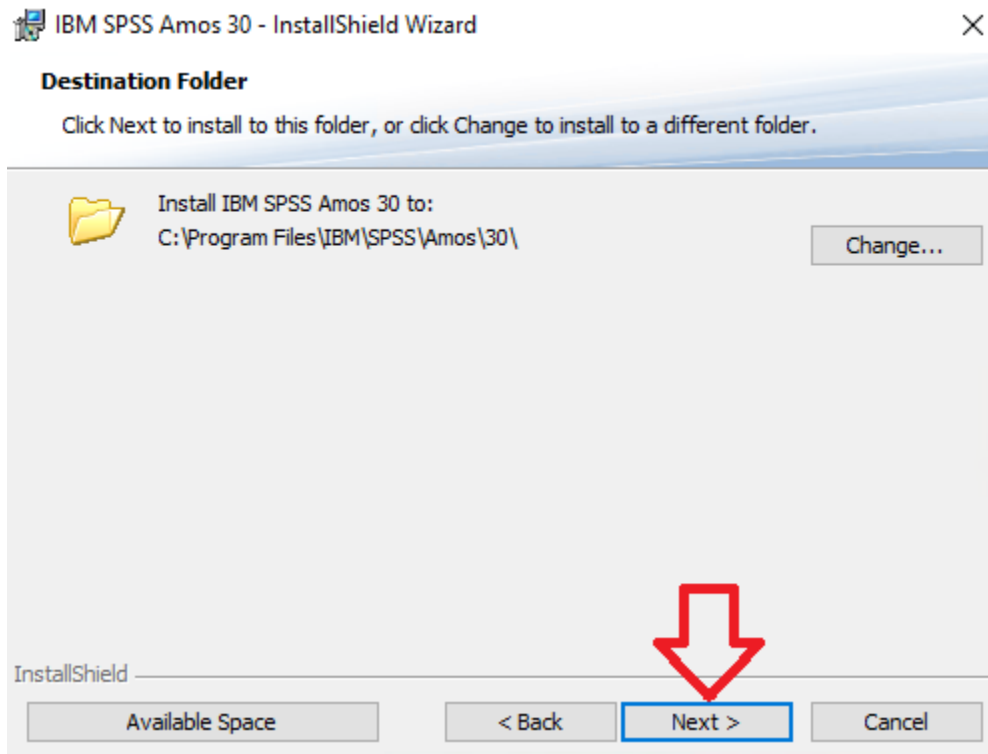
3. Click on **Next**.



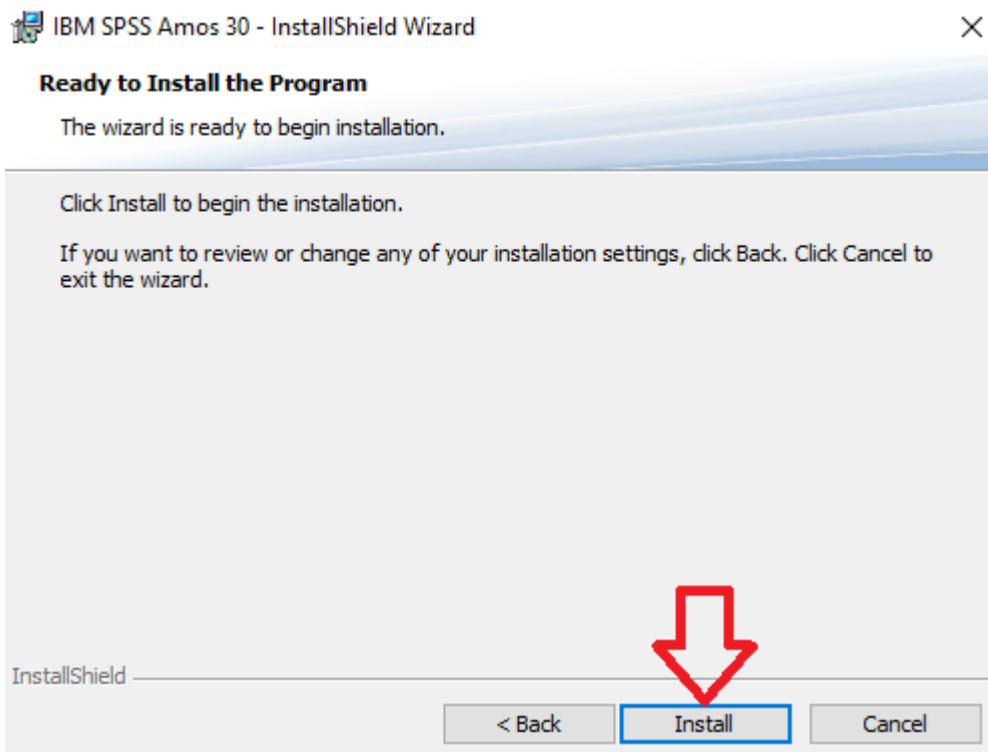
4. Accept the License Agreement and click **Next**.



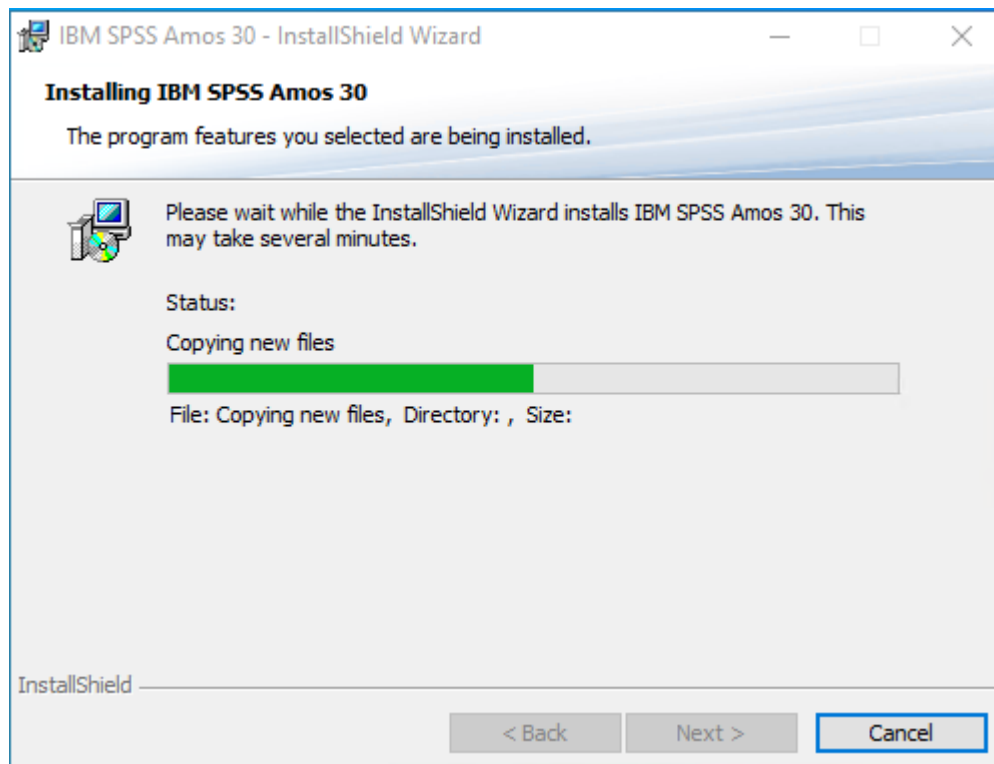
5. Click on **Next**.



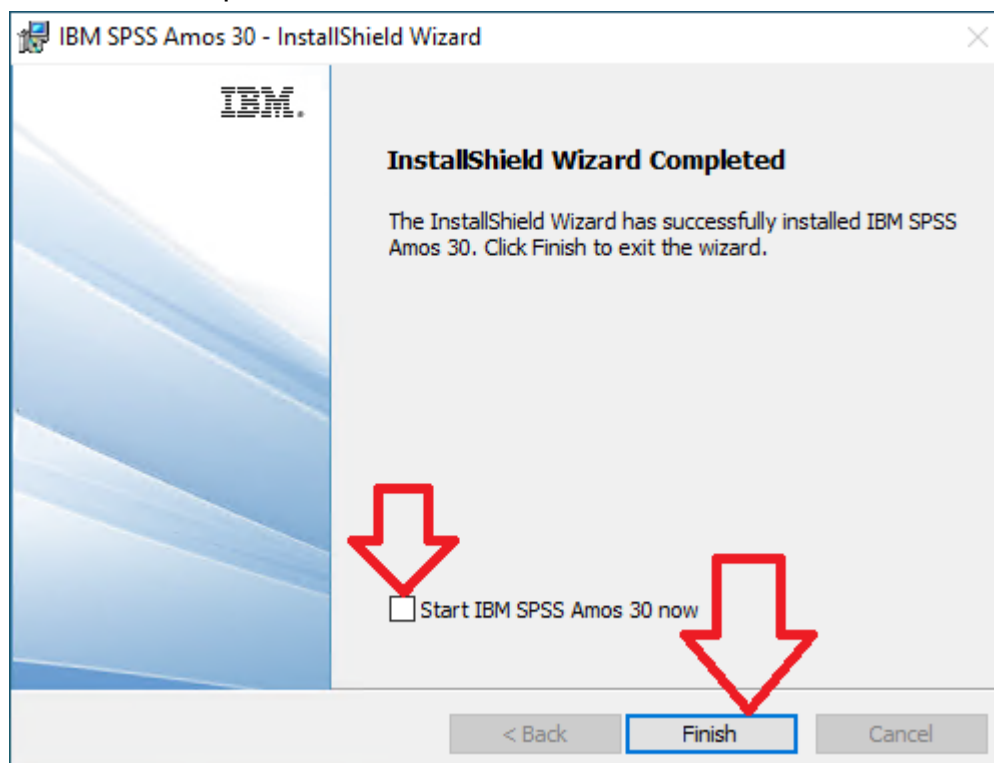
6. Click on **Install**.



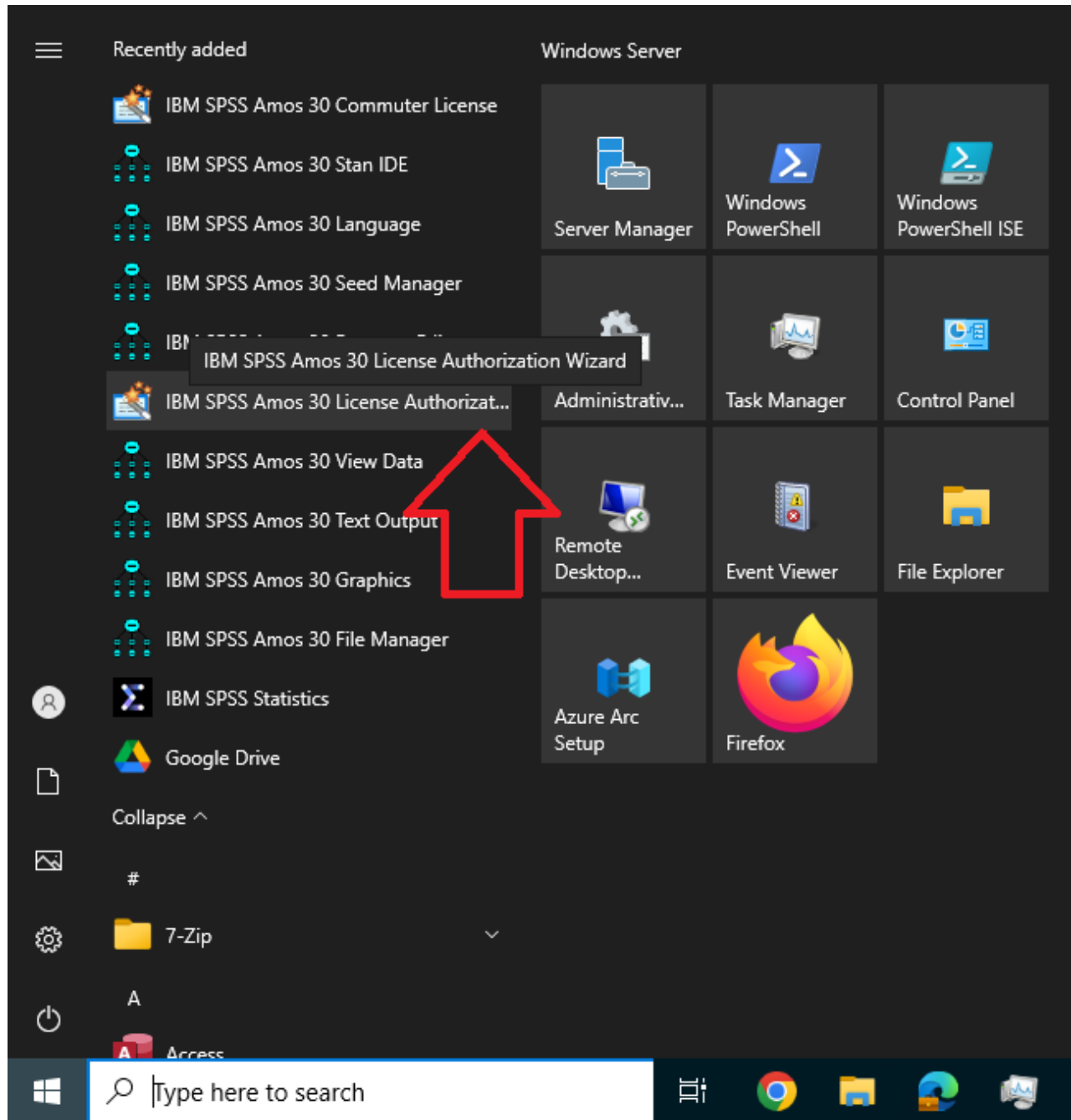
Wait for the installation to complete.



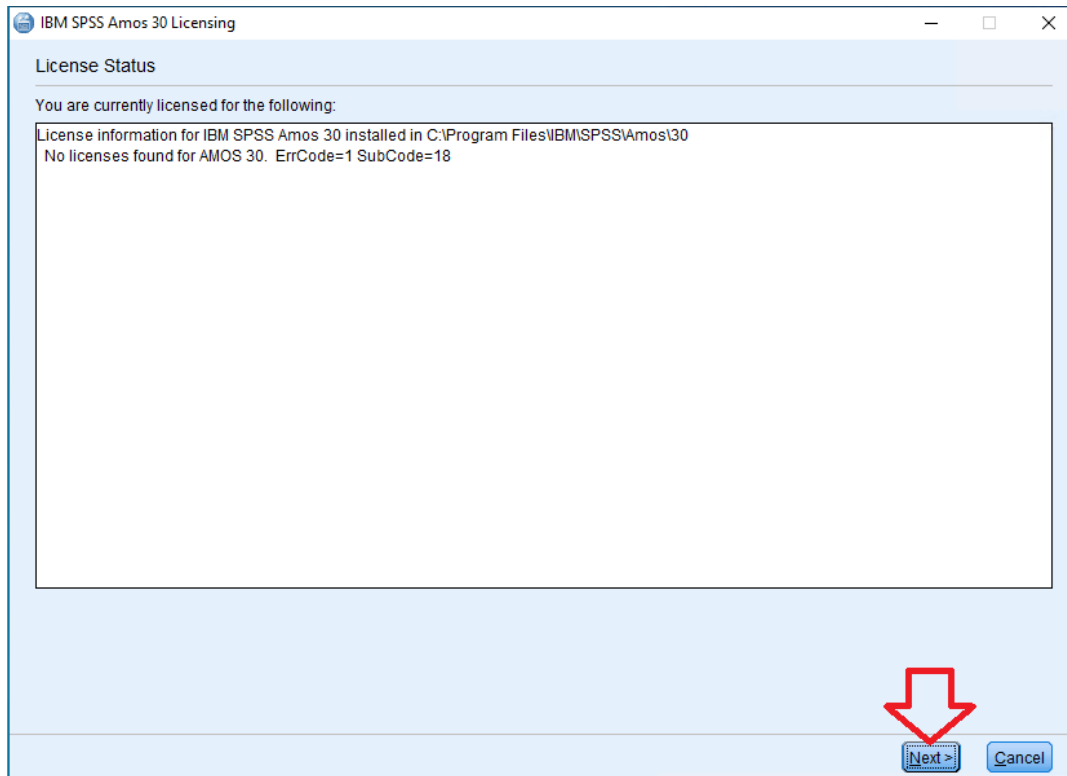
7. **Uncheck** the option **Start IBM SPSS Amos 30 now** and click on **Finish**.



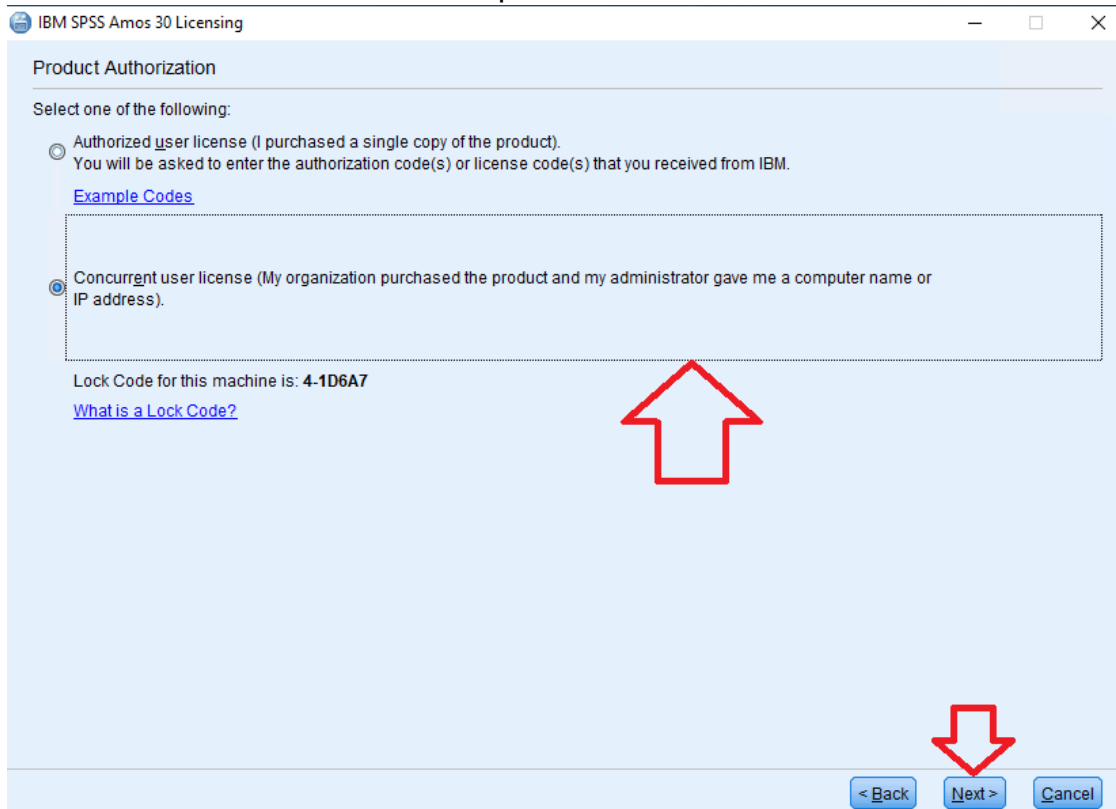
8. Run **IBM SPSS AMOS 30 License Authorization Wizard** from start menu.



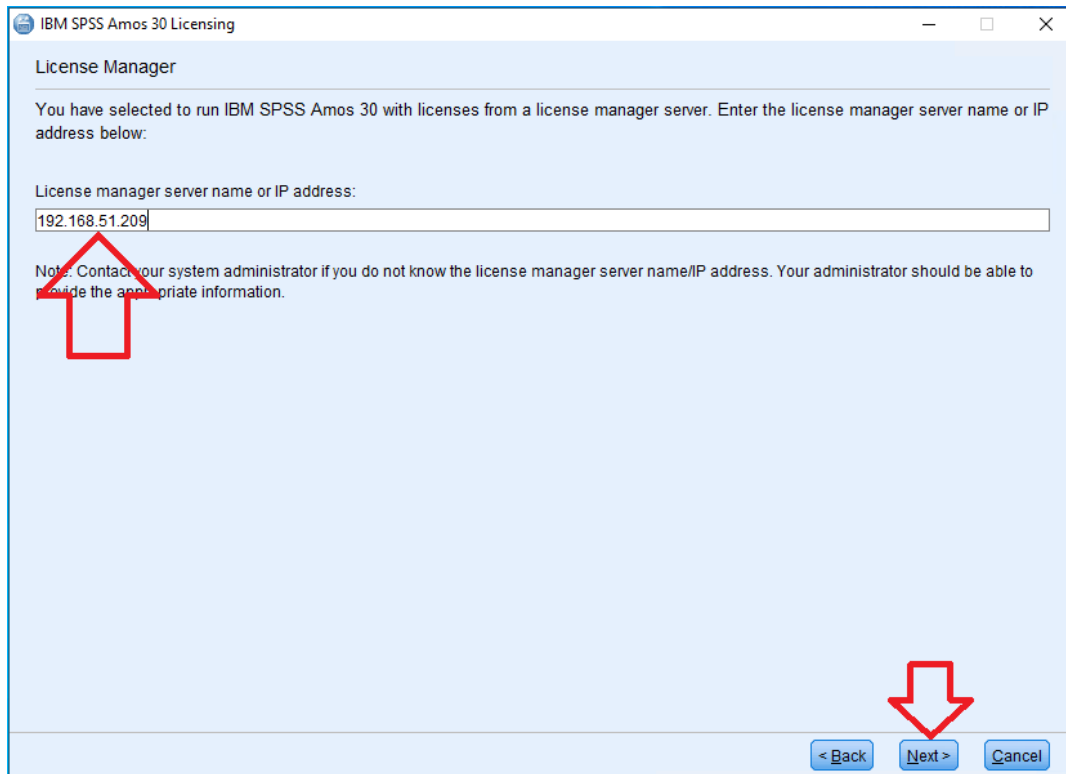
9. Click on **Next**.



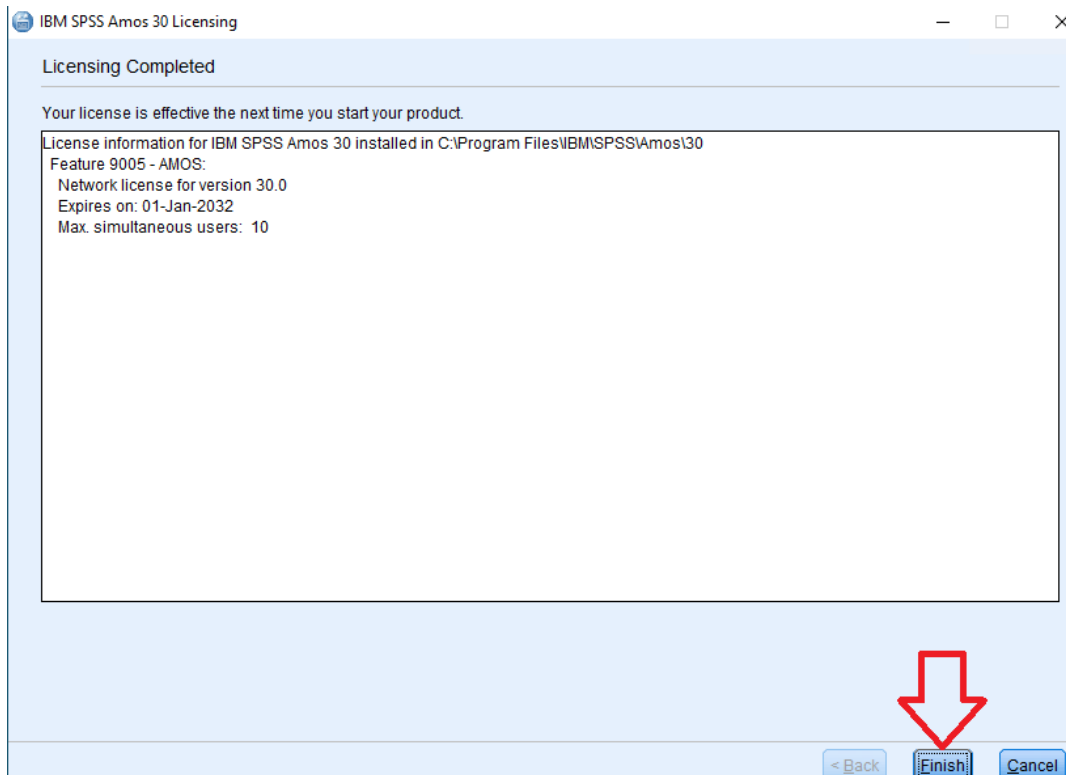
10. Select **Concurrent user license** option and click on **Next**.



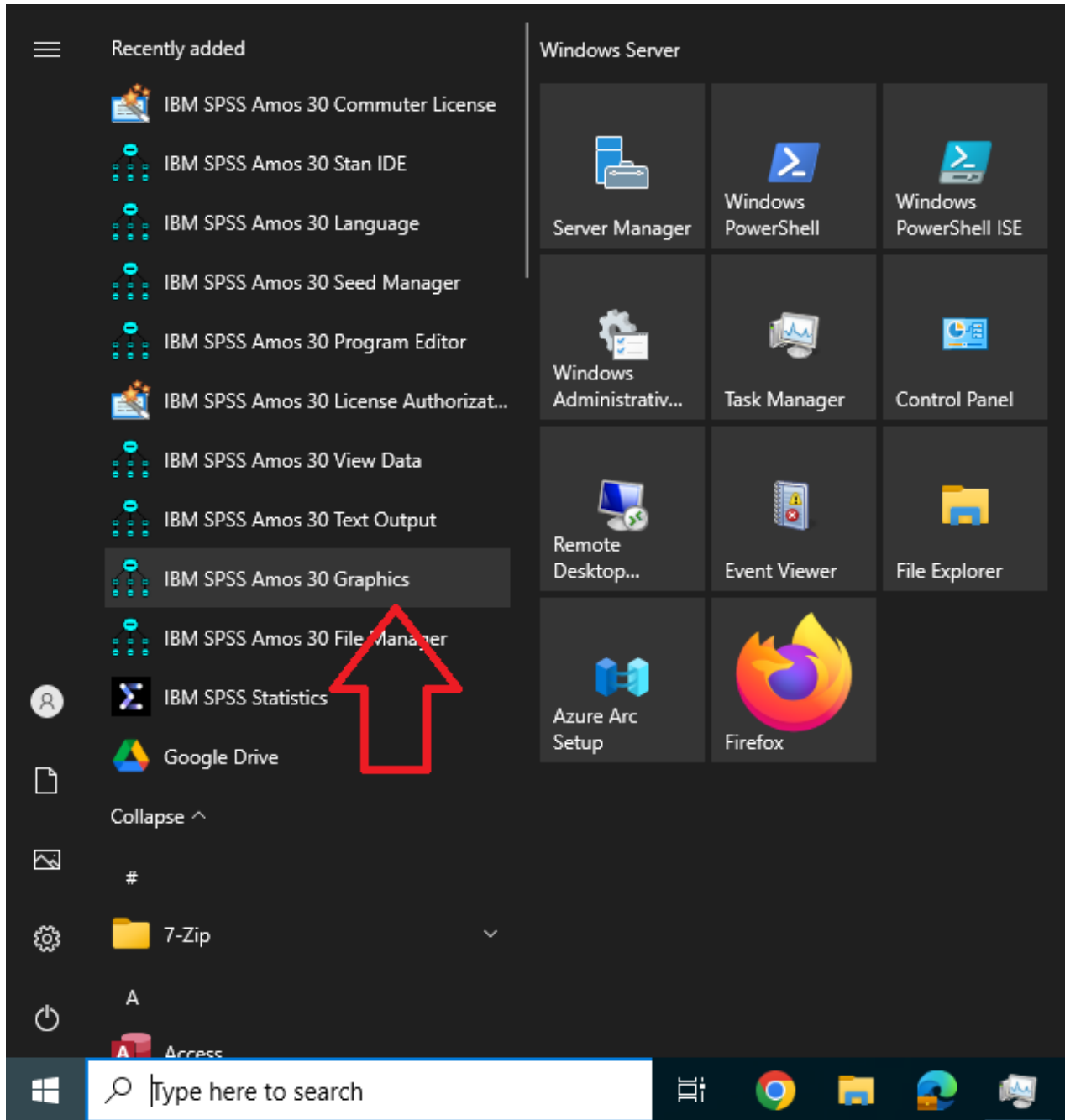
11. Enter IP address of SPSS license server and click on **Next**.

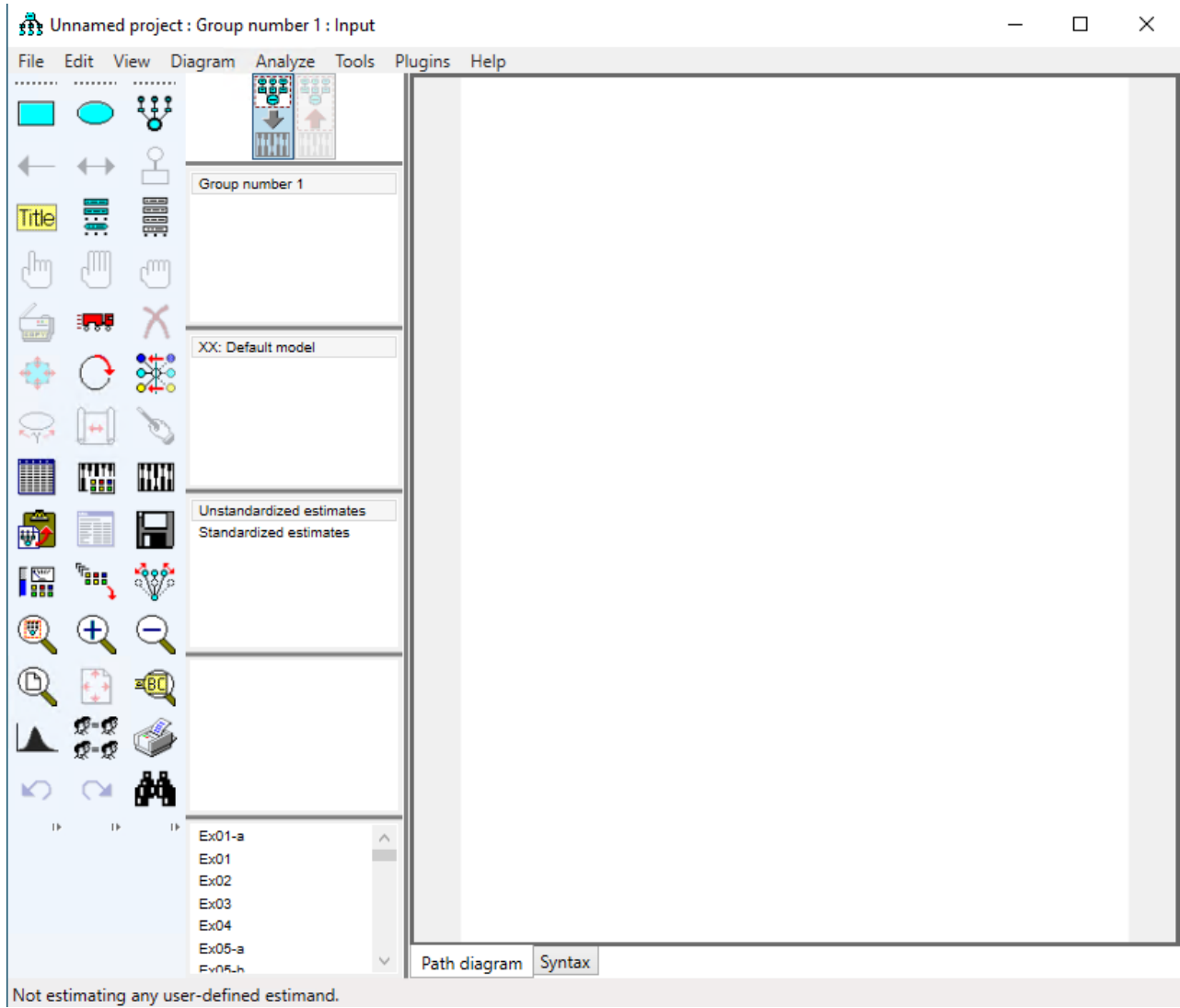


12. Click on **Finish**.



Run **IBM SPSS Amos 30 Graphics** from start menu.





\*\*\*\*\*End of File\*\*\*\*\*