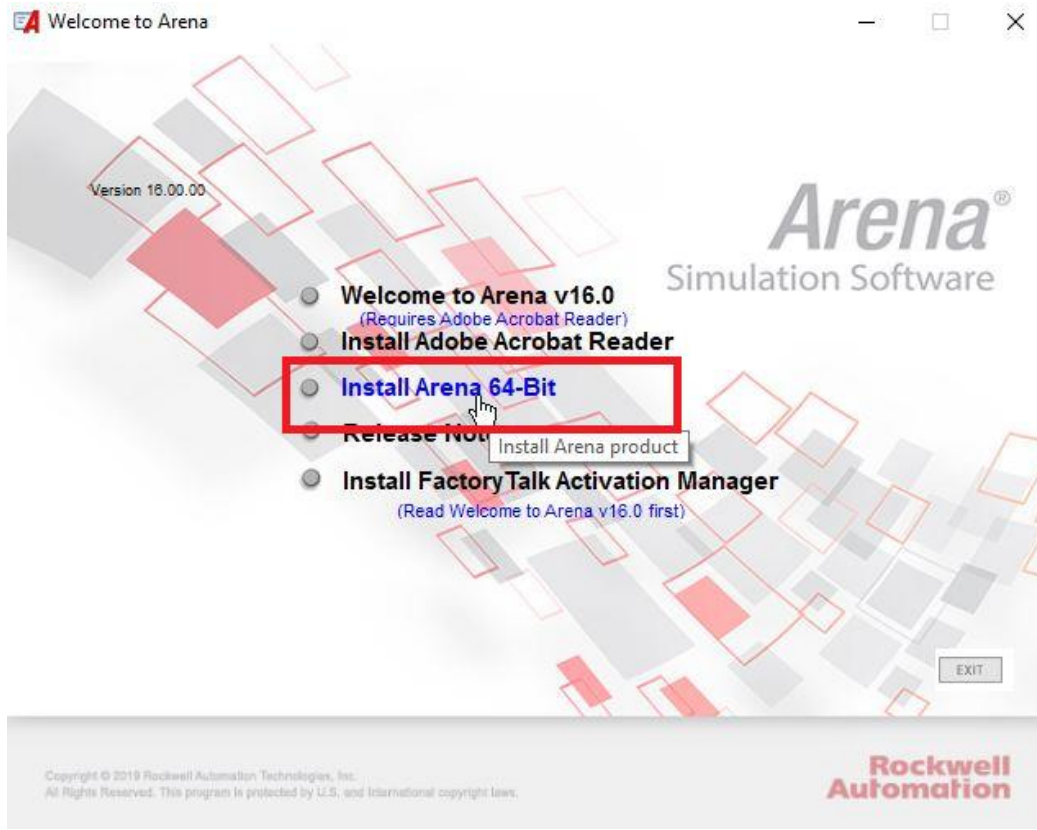
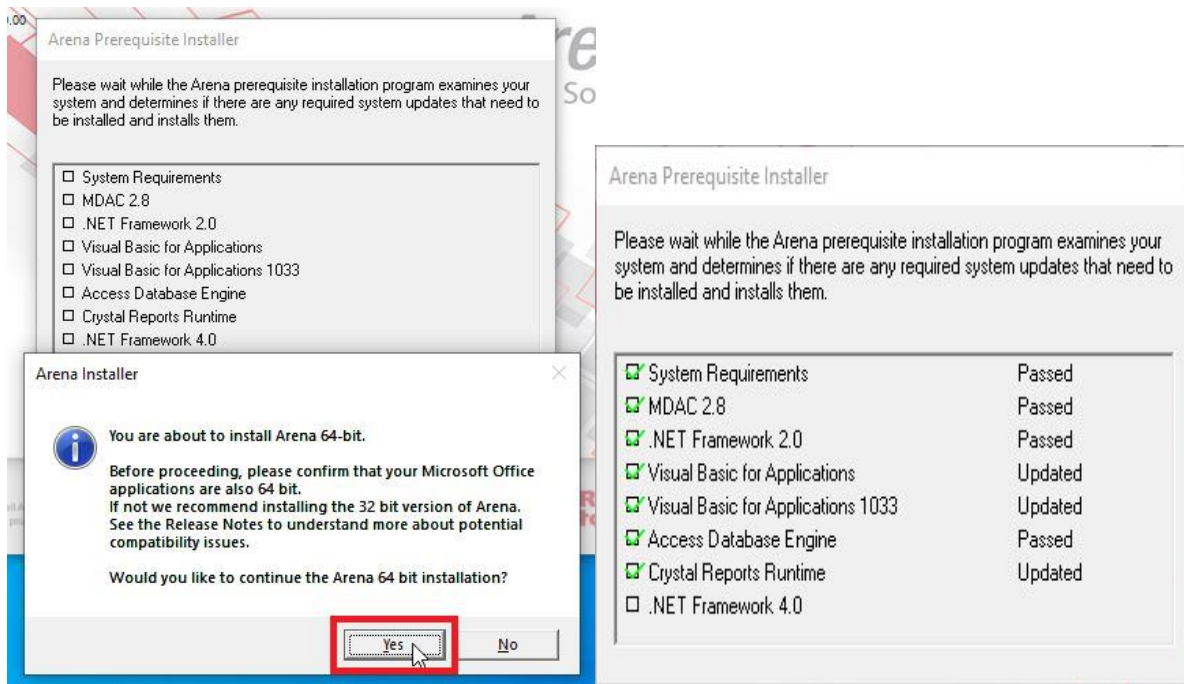


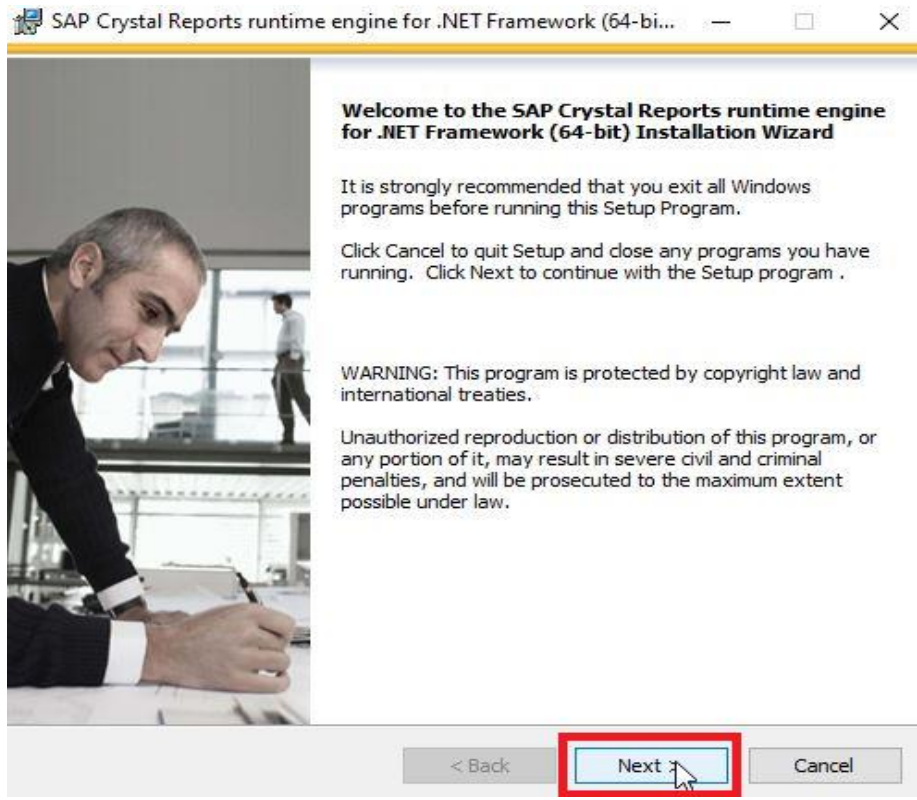
Step 3: Click on “Install Arena 54-Bit”



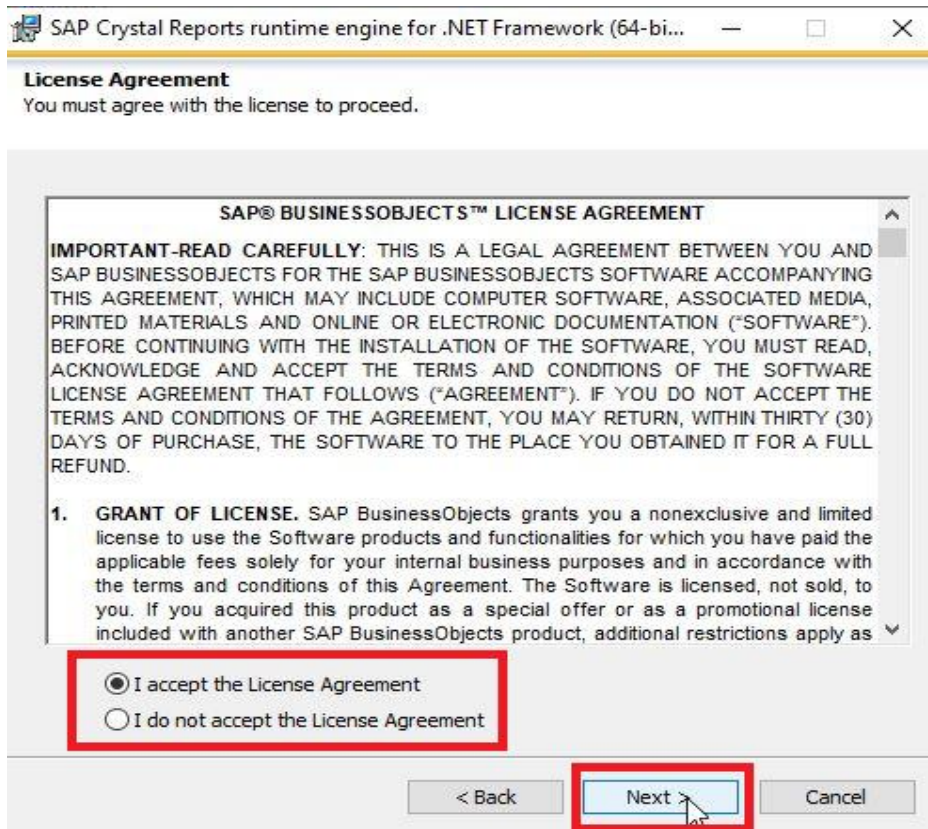
Step 4: Click on “Yes”



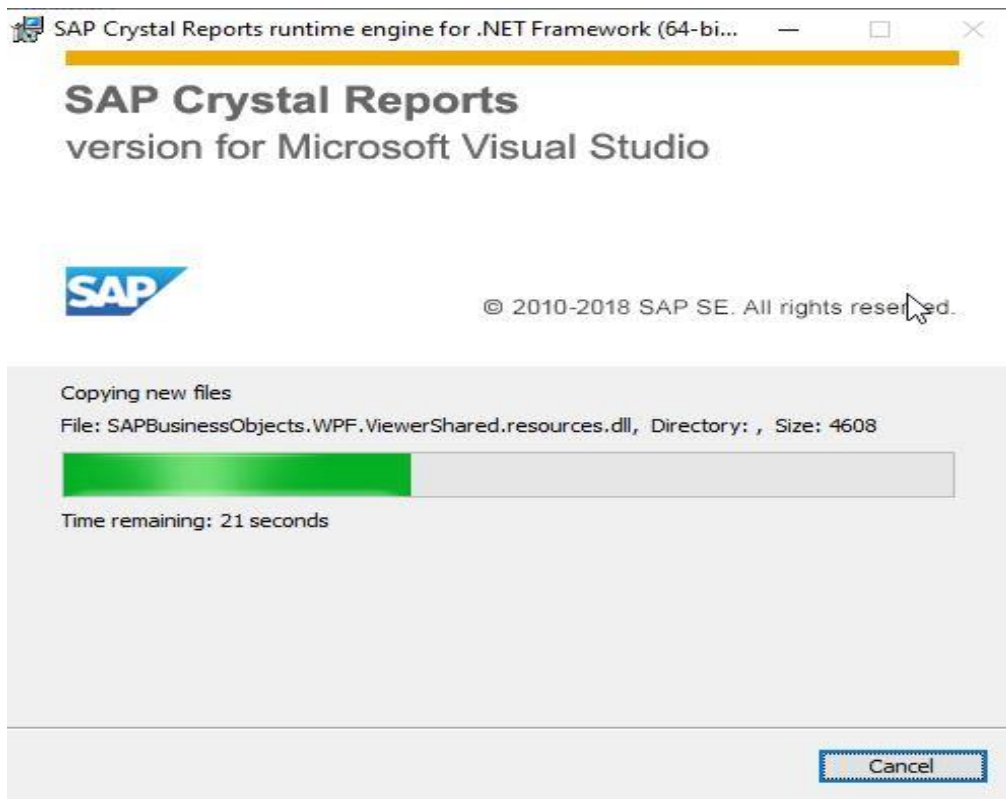
Step 5: Click on Next to install SAP Crystal Reports.



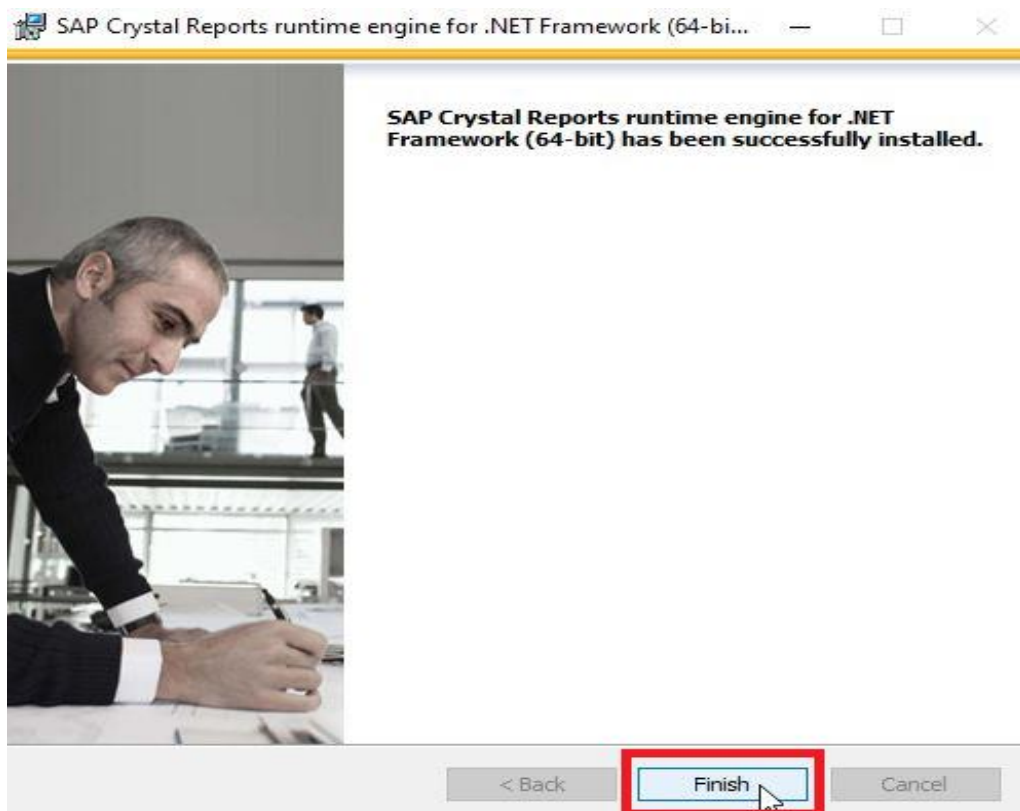
Step 6: Accept License Agreement and click Next.



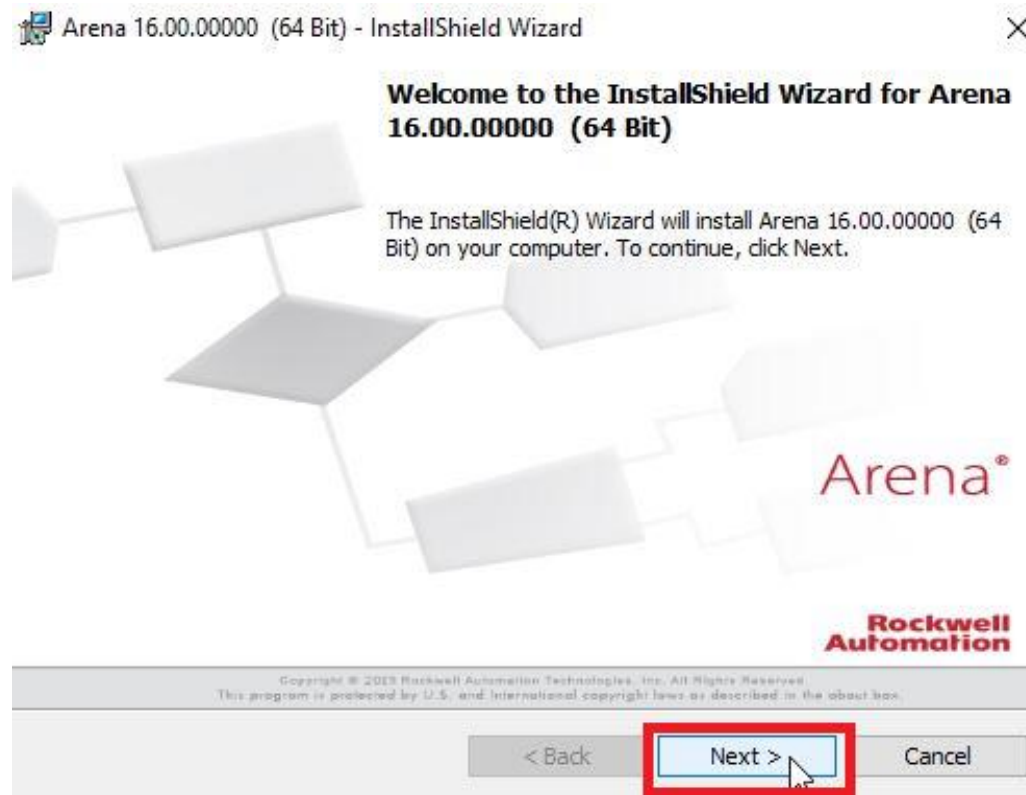
Step 7: Installation is in Progress...



Step 8: Click on Finish...



Step 9: Click on Next to Start Arena Installation...



Step 10: Accept License Agreement and Click Next...



Step 11: Enter Username and Organization Name...

Arena 16.00.00000 (64 Bit) Setup

Customer Information

Please enter your information.

User Name:
Deepak

Organization:
IIMA

Enter your 10 digit activation Serial Number (on Master Disk label or Activation Certificate). If you are a student, type in the word STUDENT. If this is an evaluation or runtime installation, leave this field blank:

InstallShield

< Back Next > Cancel

Step 12: Select First Option and Click Next...

Arena 16.00.00000 (64 Bit) - InstallShield Wizard

Setup Type

Choose the setup type that best suits your needs.

Please select a setup type.

Standard Feature Set Installation to Default Location

All typical preselected program features will be installed to the default location(s) on your computer. (May require the most disk space.)

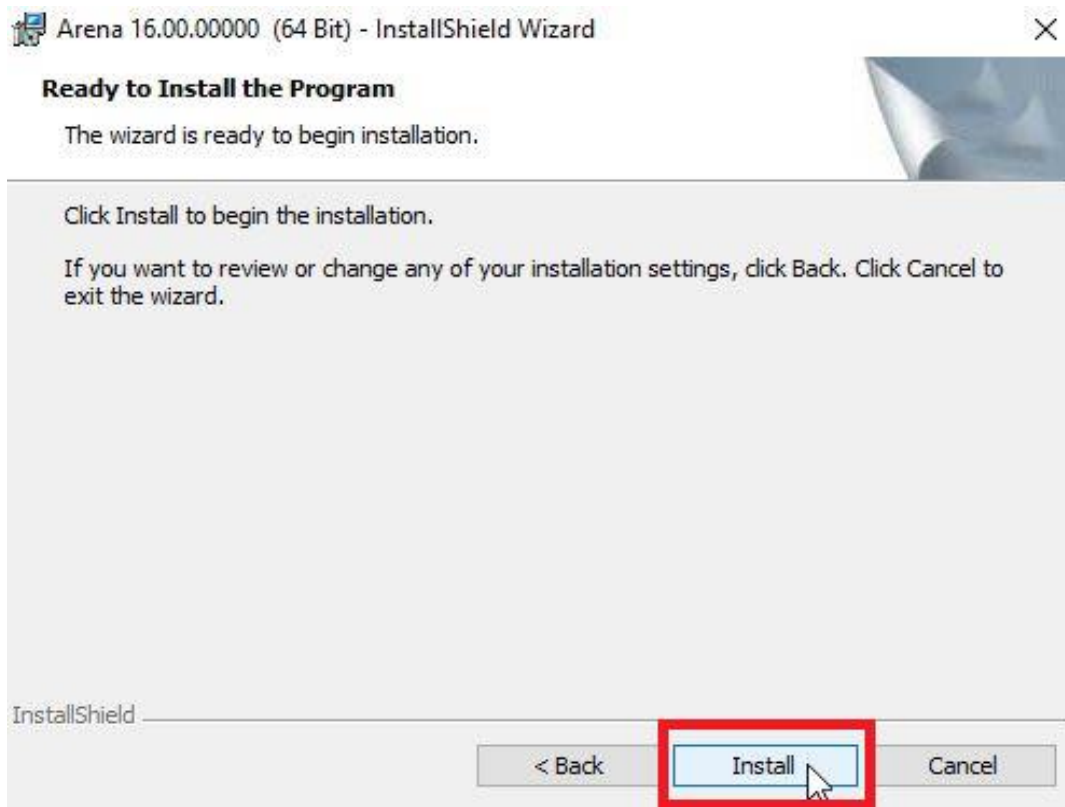
Custom Location Selection and/or Custom Feature Selection

You may choose which program features you want installed. You may also choose where the product files will be installed. Recommended for advanced users.

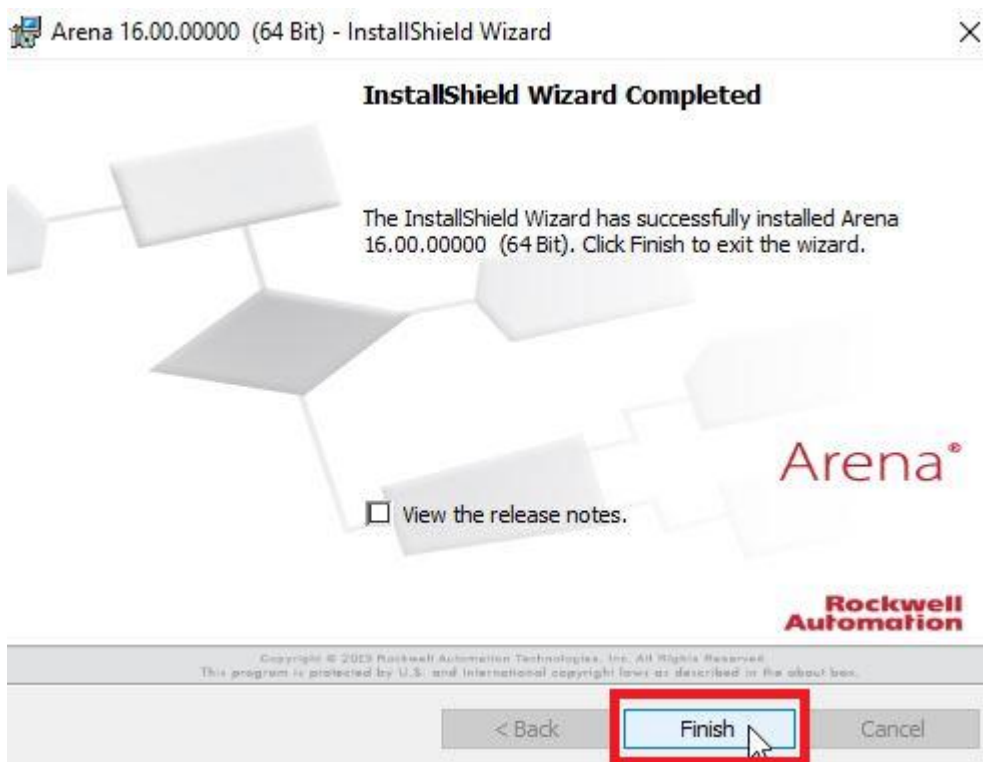
InstallShield

< Back Next > Cancel

Step 13: Select First Option and Click Next...

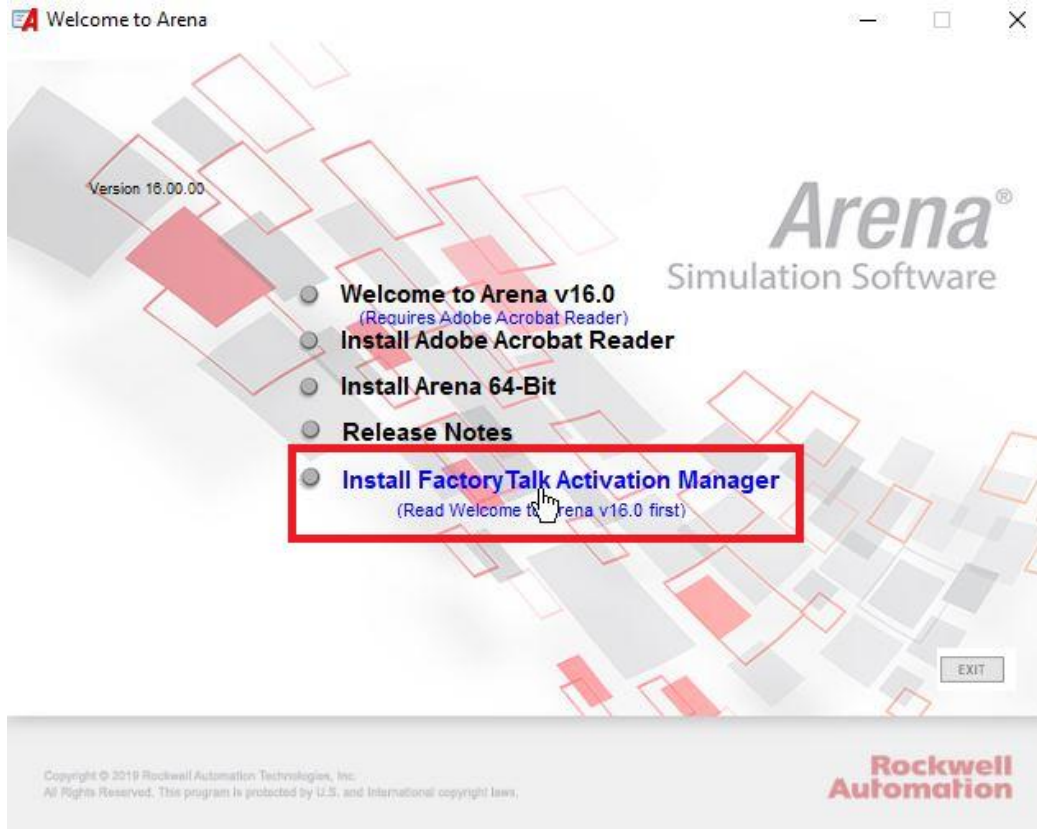


Step 14: Click Finish...



❖ Install Factory Talk Activation Manager to Activate the Arena 16

Step 15: Click “Install Factory Talk Activation Manager”



Step 16: Click “Install now”



Step 17: Click “Accept all”

End User License Agreements

Please read and accept all license agreements.

Rockwell Automation Technologies Inc.

ROCKWELL AUTOMATION END USER LICENSE AGREEMENT Rev (02/2016)

IMPORTANT—READ THIS AGREEMENT CAREFULLY

This end user license agreement (“EULA”) is a legal contract between You (either an individual or a single entity) and Rockwell Automation, Inc. (“Rockwell Automation”) for the Software product(s) and Documentation that Rockwell Automation licenses to You. ROCKWELL AUTOMATION IS WILLING TO LICENSE THE SOFTWARE AND DOCUMENTATION TO YOU ONLY ON THE CONDITION THAT YOU ACCEPT ALL OF THE TERMS AND CONDITIONS IN THIS EULA. YOU ACCEPT AND AGREE TO BE BOUND BY THE TERMS OF THIS EULA BY DOWNLOADING, INSTALLING, COPYING, OR OTHERWISE USING THE SOFTWARE. IF YOU ARE ACCEPTING THESE TERMS ON BEHALF OF ANOTHER PERSON, COMPANY, OR OTHER LEGAL ENTITY, YOU REPRESENT AND WARRANT THAT YOU HAVE FULL AUTHORITY TO BIND THAT PERSON, COMPANY, OR LEGAL ENTITY TO THESE TERMS. IF YOU DO NOT AGREE TO THESE TERMS, DO NOT DOWNLOAD, INSTALL, COPY, ACCESS, OR USE THE SOFTWARE, AND PROMPTLY RETURN THE SOFTWARE WITH ALL ACCOMPANYING ITEMS TO YOUR PLACE OF PURCHASE FOR A FULL REFUND. OTHERWISE,

Accept all

Decline

[Release notes](#)

Step 18: Installation is in Progress...



We'll take it from here.

Some updates may require you to restart your computer before the installation completes.



Installing FactoryTalk Diagnostics v3.00.00...
Publishing product information

Cancel

Restart now

Restart later

Step 19: Click "Restart now" ...



That's it!

Once you restart your computer you are ready to run FactoryTalk Activation.

[Installation Summary](#)

Want to know when there is an update?

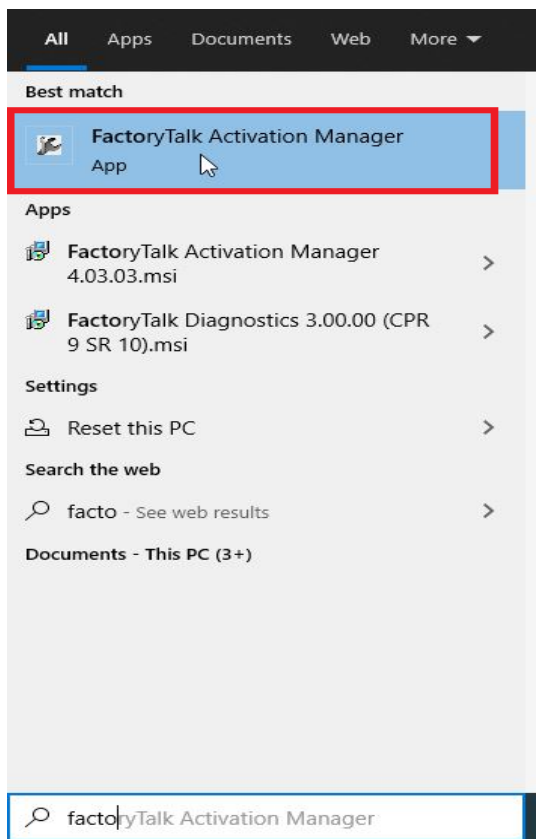
[Register for updates](#)

Want to install Adobe Acrobat Reader?

[Download it free](#)

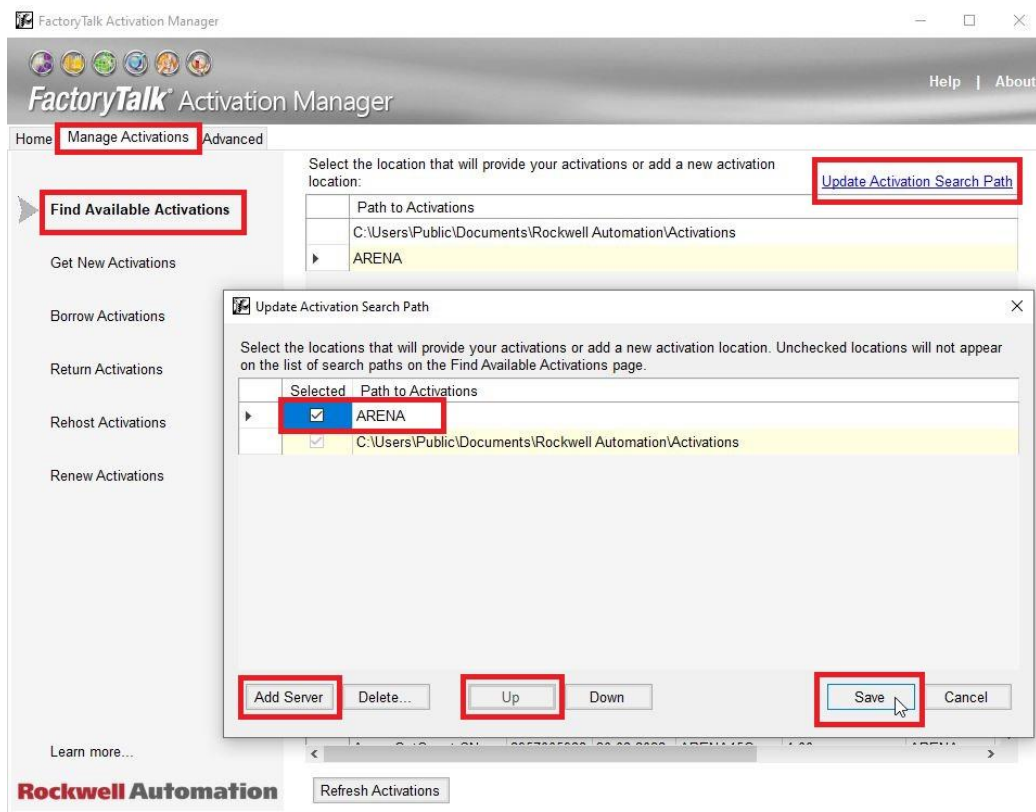
❖ Arena 16 Activation Steps

Step 20: Open "Factory Talk Activation Manager" From Search Bar...

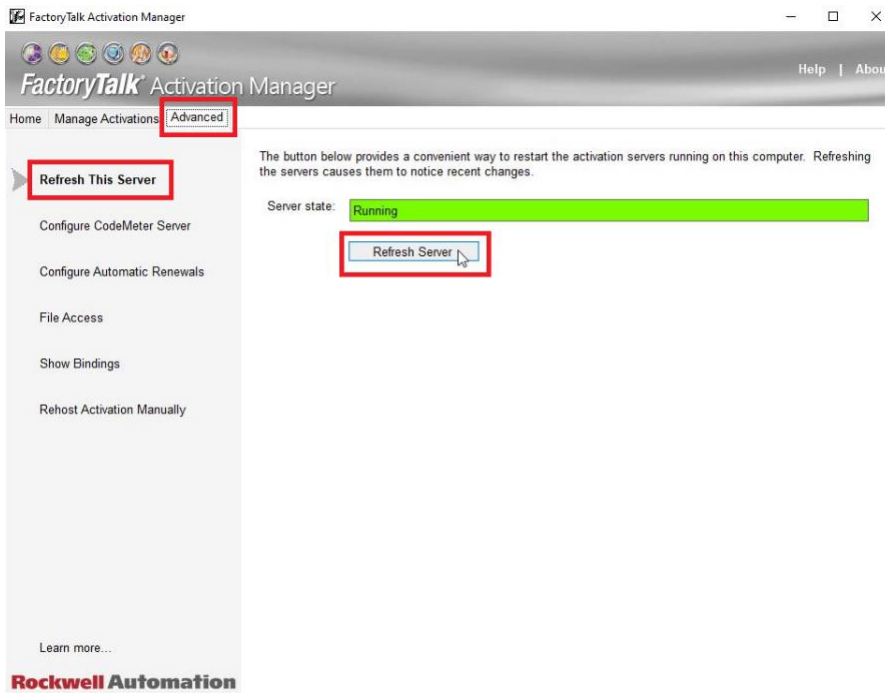


Step 21: Point client machine to the server using the following instructions.

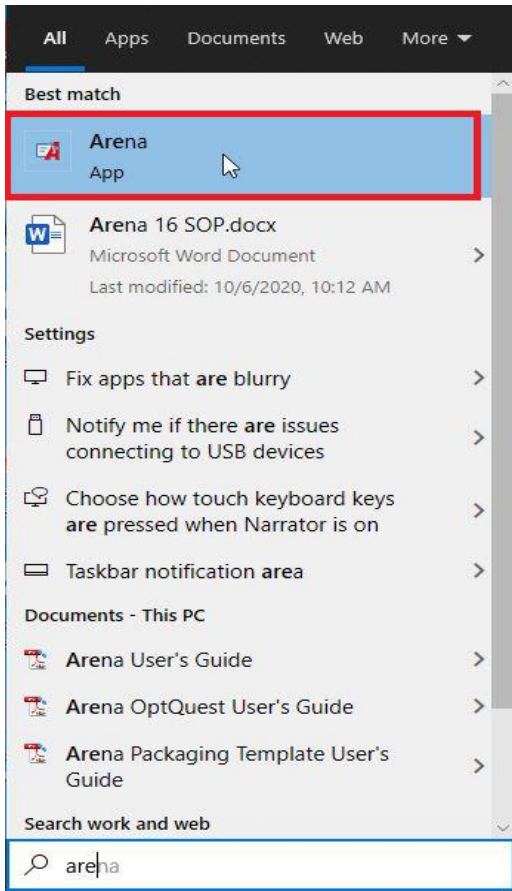
1. Open **Factory Talk Activations Manager** > **Manage Activations** tab > **Find Available Activations**
2. Select **Update Activation Search Path**
3. Select **Add Server**
4. Add the path to where the license resides on the server. You can enter the server name "**ARENA**".
5. Click **Up** to make this path the **1st line**. Make sure it is selected then click **Save**
6. Click the **Advanced** tab > **Refresh This Server** > Click **Refresh Server** > Server State should be **Green** – **Running**



Step 22: Click **Refresh Server** > Server State should be **Green** – **Running**.



Step 23: Open Arena and check.



*****END*****